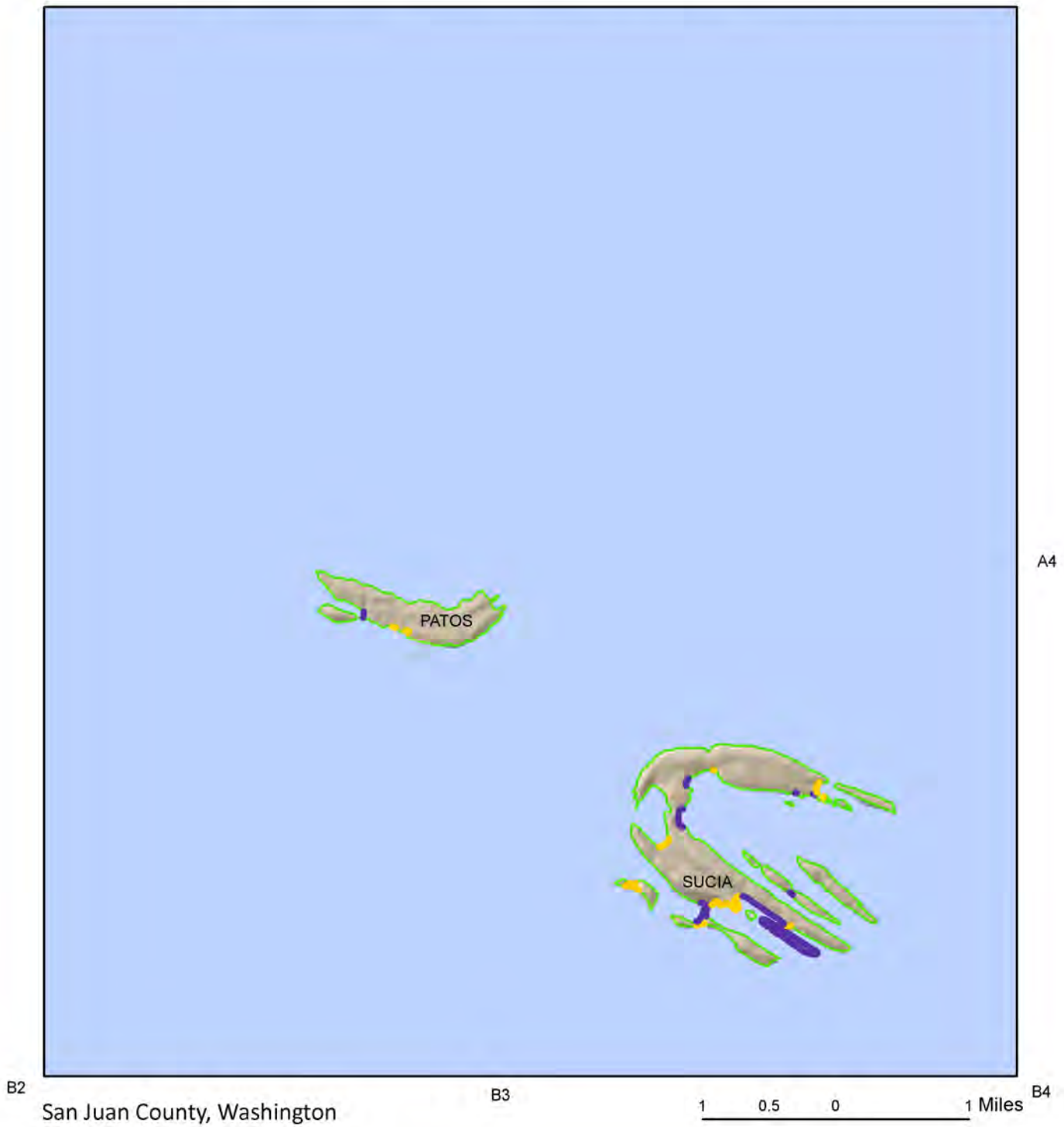


San Juan County
Nearshore Process Degradation
Map Book



NEARSHORE PROCESS DEGRADATION



Sum of Process Degradation - Normalized

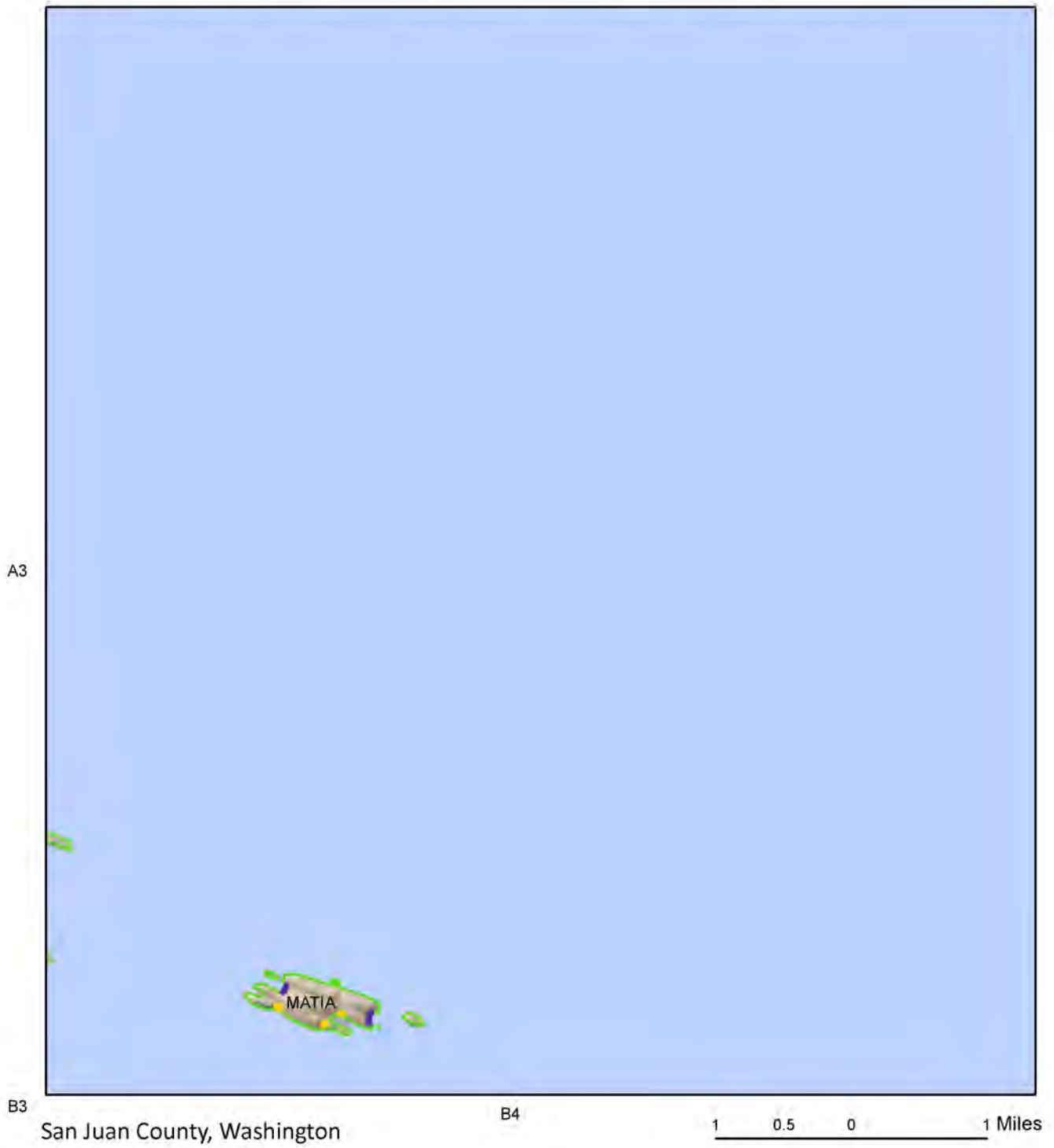
- **HIGH (38 - 92%)**
- **MEDIUM (13 - 38%)**
- **LOW (0.000021 - 13%)**
- **No Degradation (0%)**



A3



NEARSHORE PROCESS DEGRADATION



Sum of Process Degradation - Normalized

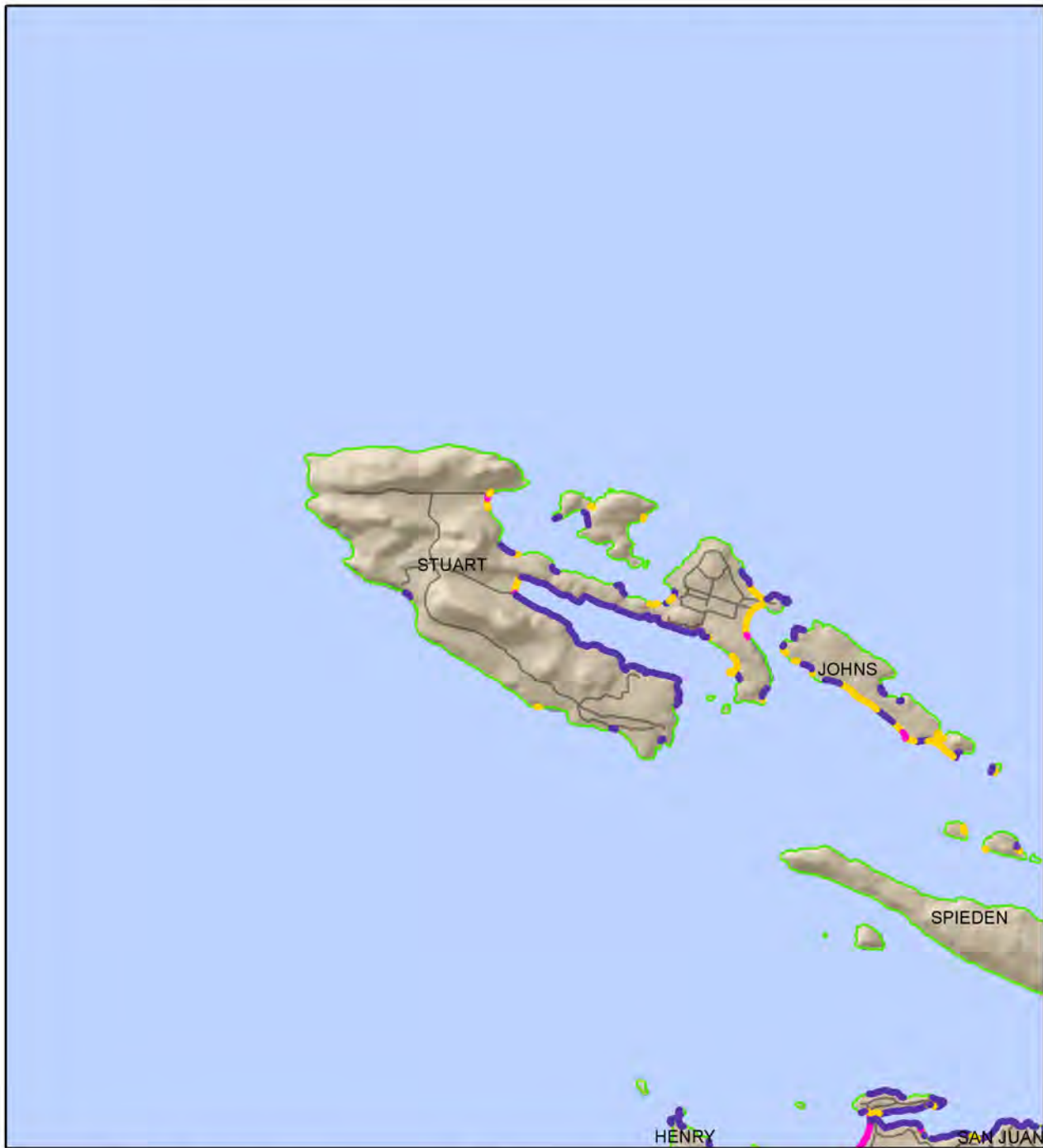
- **HIGH (38 - 92%)**
- **MEDIUM (13 - 38%)**
- **LOW (0.000021 - 13%)**
- **No Degradation (0%)**



A4



NEARSHORE PROCESS DEGRADATION



B2

San Juan County, Washington

C1



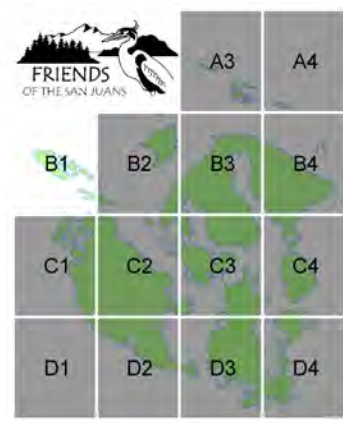
C2

Sum of Process Degradation - Normalized

- **HIGH (38 - 92%)**
- **MEDIUM (13 - 38%)**
- **LOW (0.000021 - 13%)**
- **No Degradation (0%)**

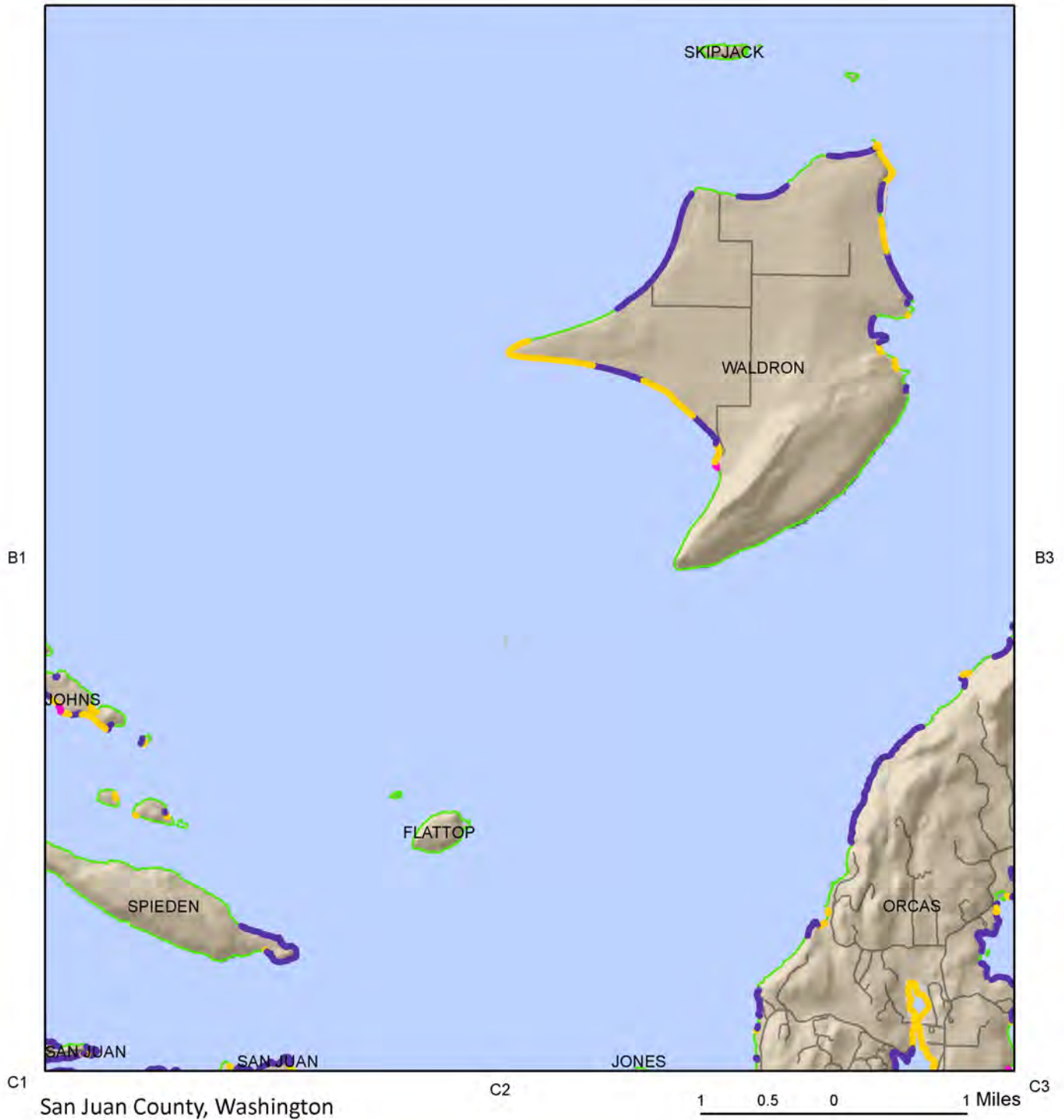


B1



NEARSHORE PROCESS DEGRADATION

A3

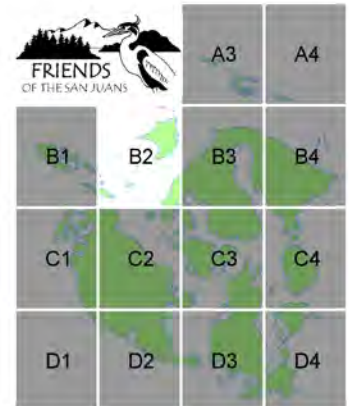


Sum of Process Degradation - Normalized

- **HIGH (38 - 92%)**
- **MEDIUM (13 - 38%)**
- **LOW (0.000021 - 13%)**
- **No Degradation (0%)**



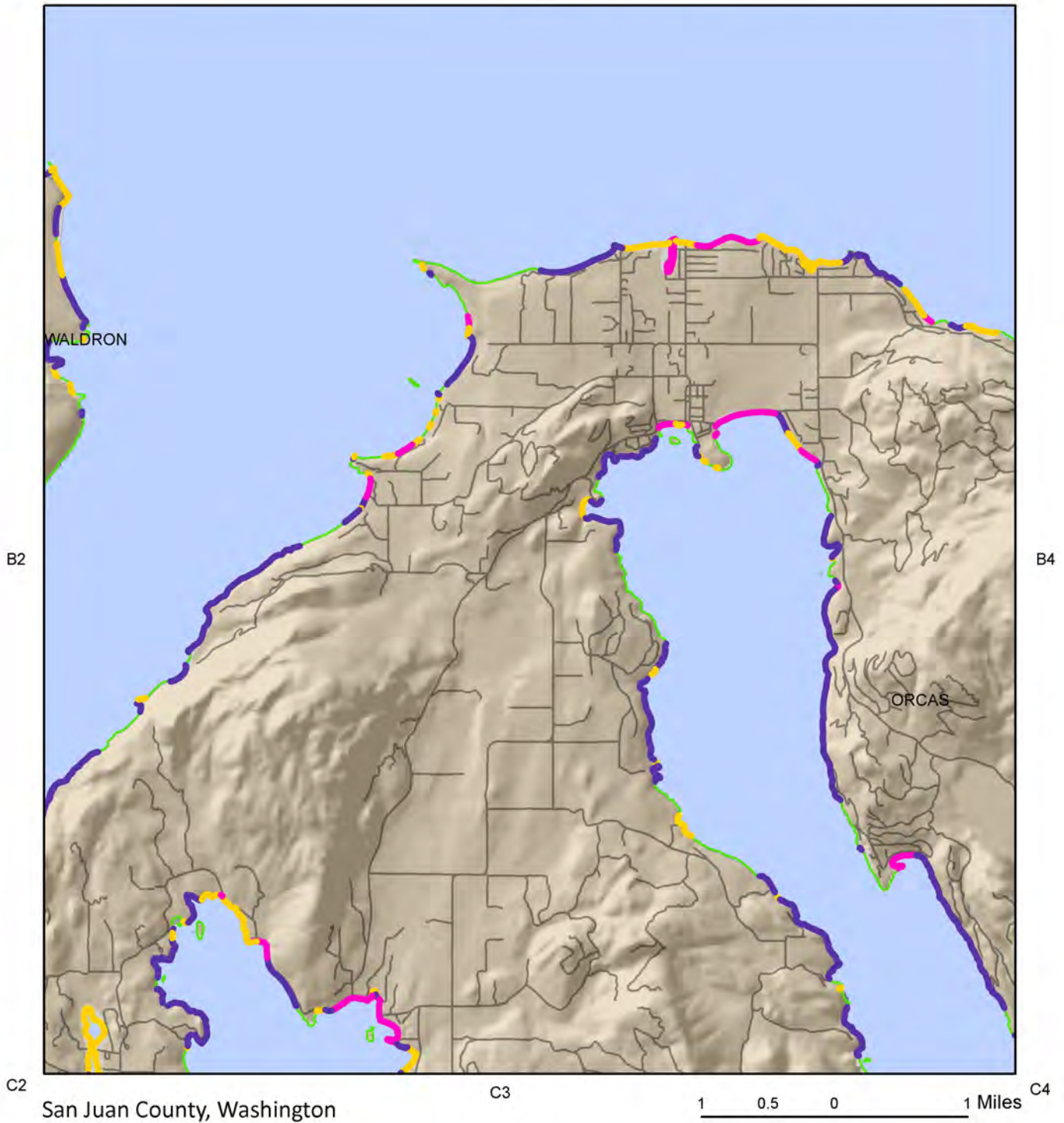
B2



NEARSHORE PROCESS DEGRADATION

A3

A4



Sum of Process Degradation - Normalized

- **HIGH (38 - 92%)**
- **MEDIUM (13 - 38%)**
- **LOW (0.000021 - 13%)**
- **No Degradation (0%)**



B3



NEARSHORE PROCESS DEGRADATION

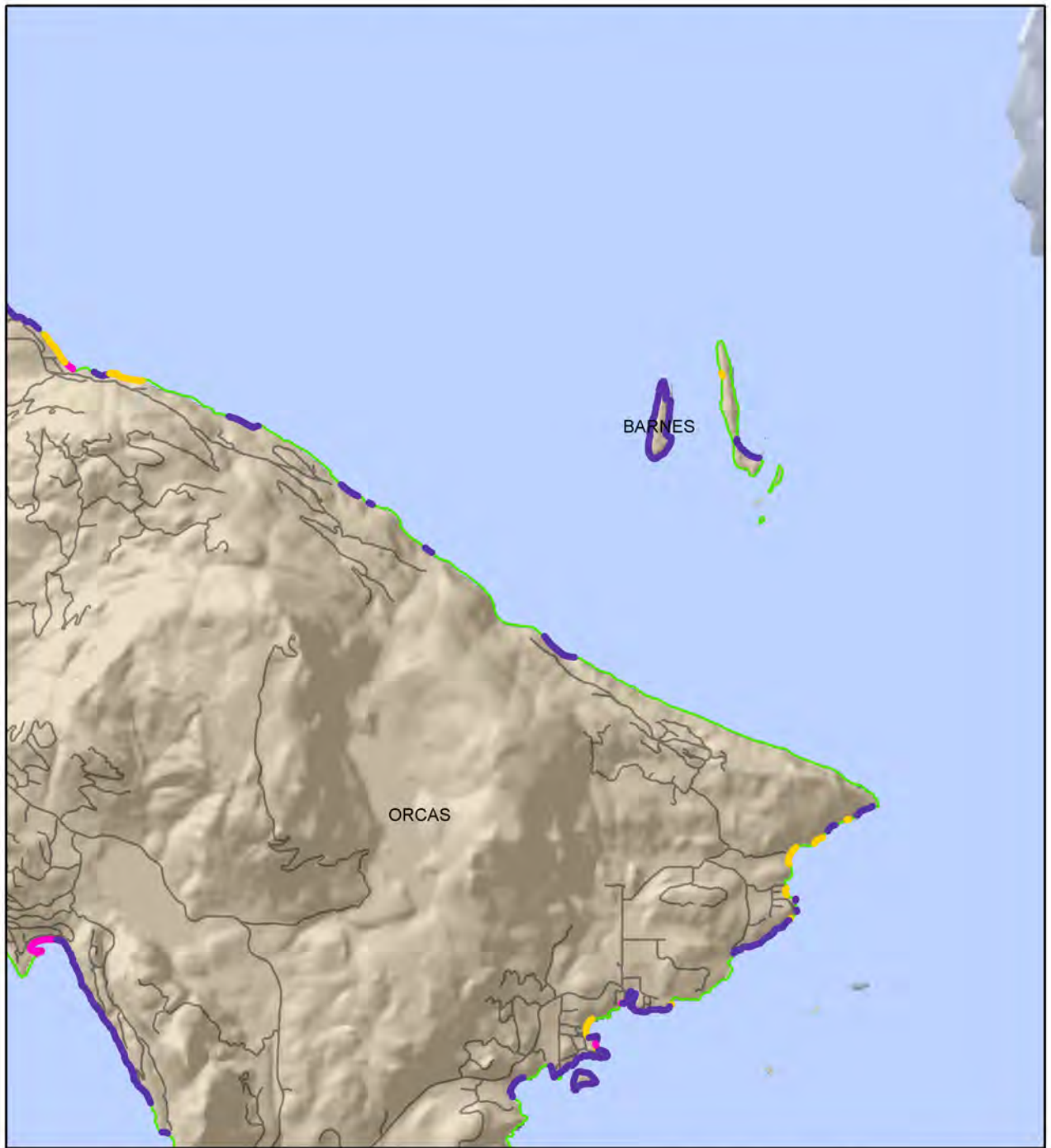
A3

A4

B3

C3

C4



San Juan County, Washington

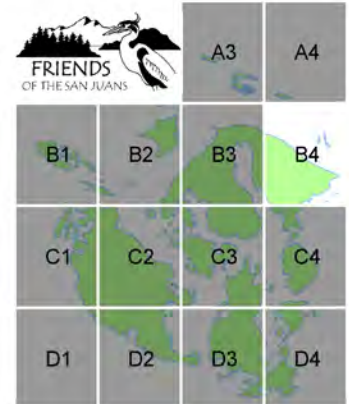
1 0.5 0 1 Miles

Sum of Process Degradation - Normalized

- **HIGH (38 - 92%)**
- **MEDIUM (13 - 38%)**
- **LOW (0.000021 - 13%)**
- **No Degradation (0%)**



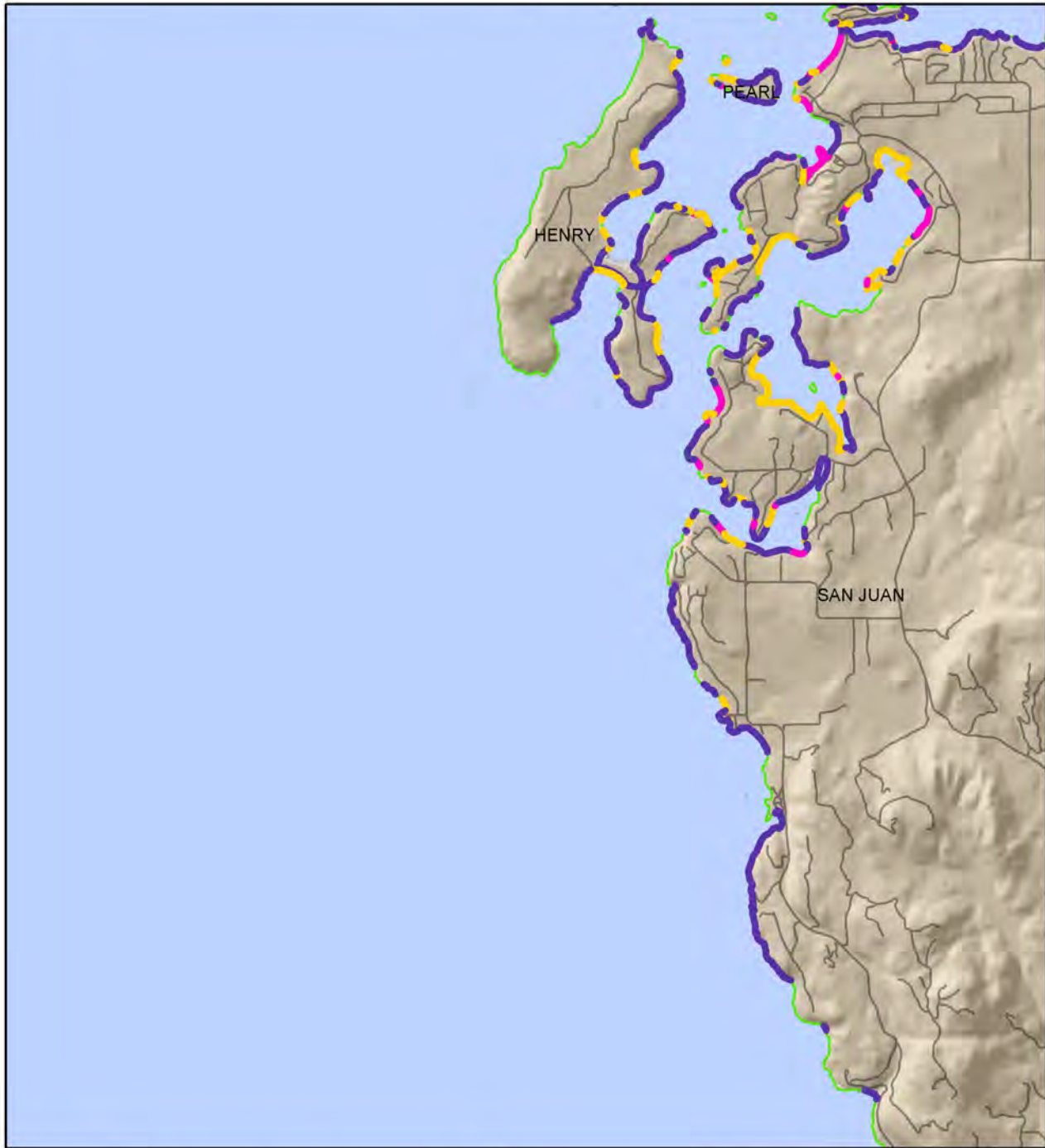
B4



NEARSHORE PROCESS DEGRADATION

B1

B2



C2

San Juan County, Washington

D1

1 0.5 0 1 Miles

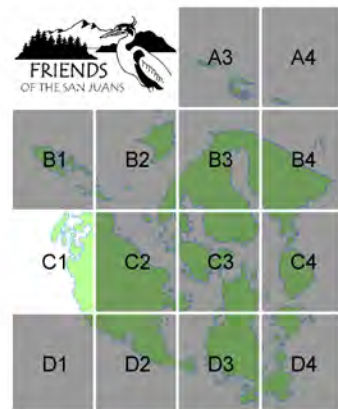
D2

Sum of Process Degradation - Normalized

- HIGH (38 - 92%)**
- MEDIUM (13 - 38%)**
- LOW (0.000021 - 13%)**
- No Degradation (0%)**



C1

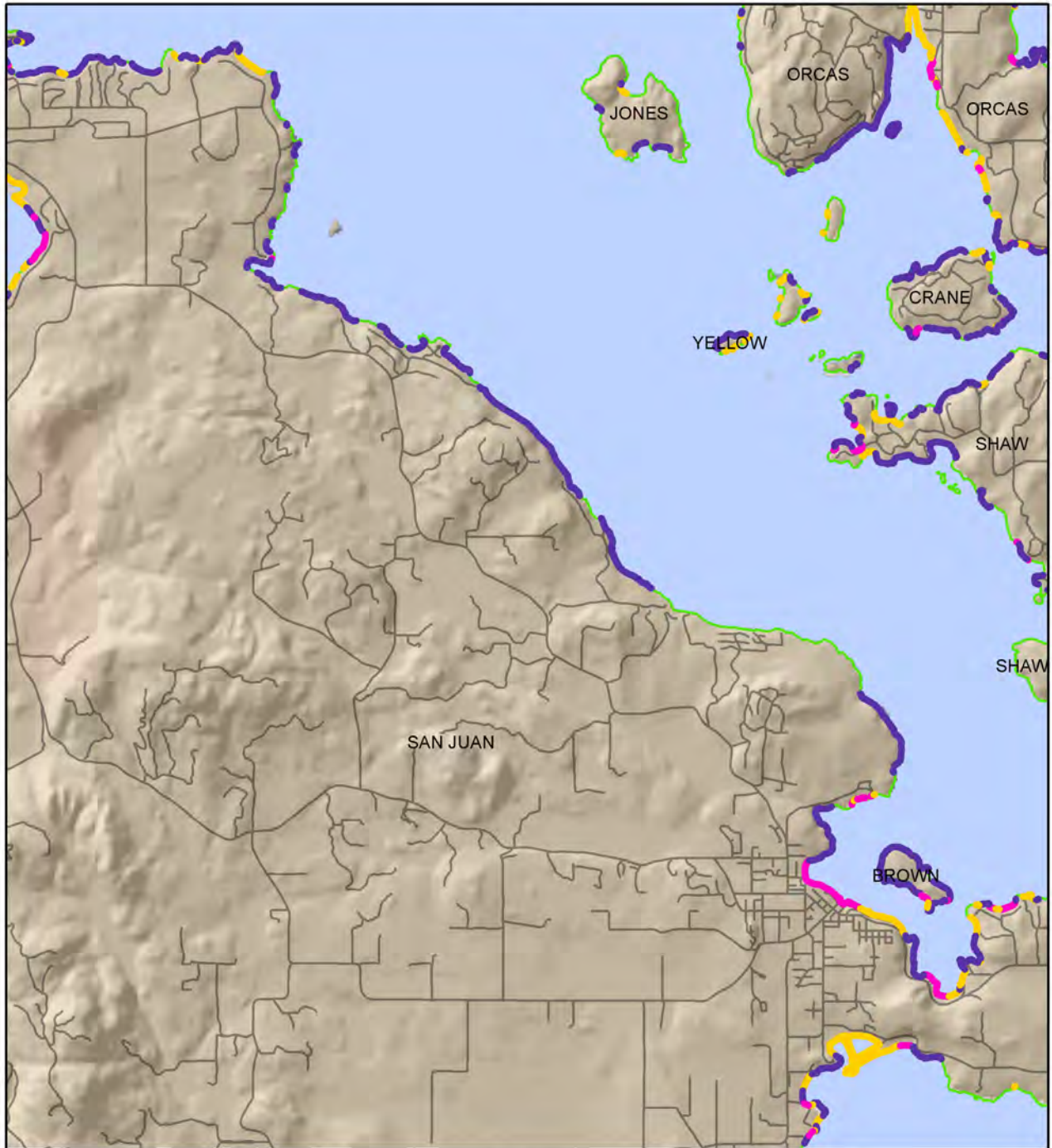


NEARSHORE PROCESS DEGRADATION

B1

B2

B3



C1

C3

D1

D2

D3

San Juan County, Washington

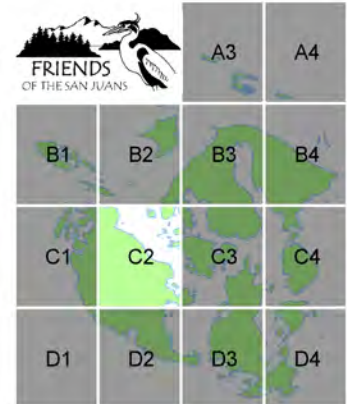
1 0.5 0 1 Miles

Sum of Process Degradation - Normalized

- **HIGH (38 - 92%)**
- **MEDIUM (13 - 38%)**
- **LOW (0.000021 - 13%)**
- **No Degradation (0%)**



C2



NEARSHORE PROCESS DEGRADATION

B2

B3

B4

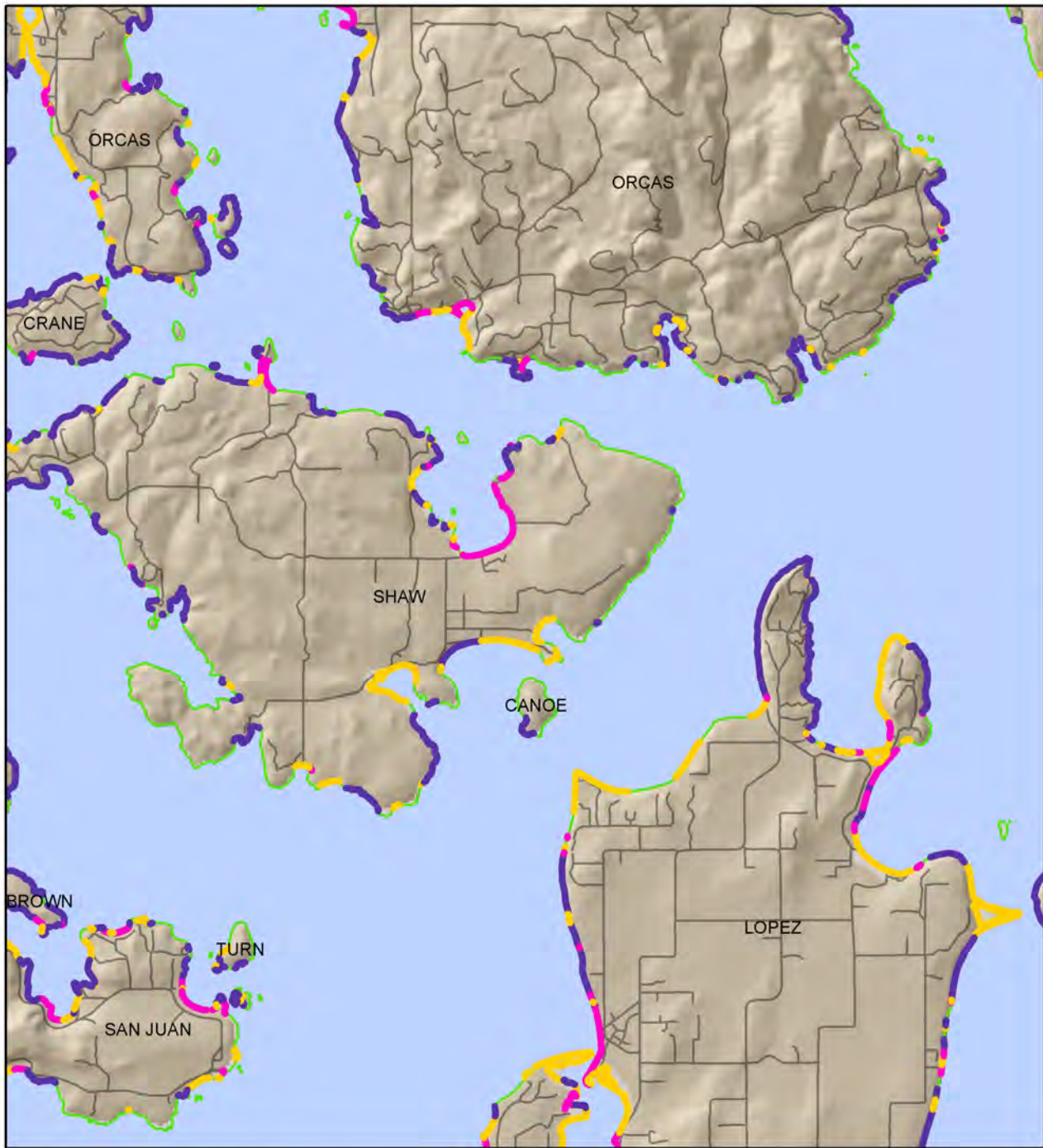
C2

C4

D2

D3

D4



San Juan County, Washington

1 0.5 0 1 Miles

Sum of Process Degradation - Normalized

- **HIGH (38 - 92%)**
- **MEDIUM (13 - 38%)**
- **LOW (0.000021 - 13%)**
- **No Degradation (0%)**



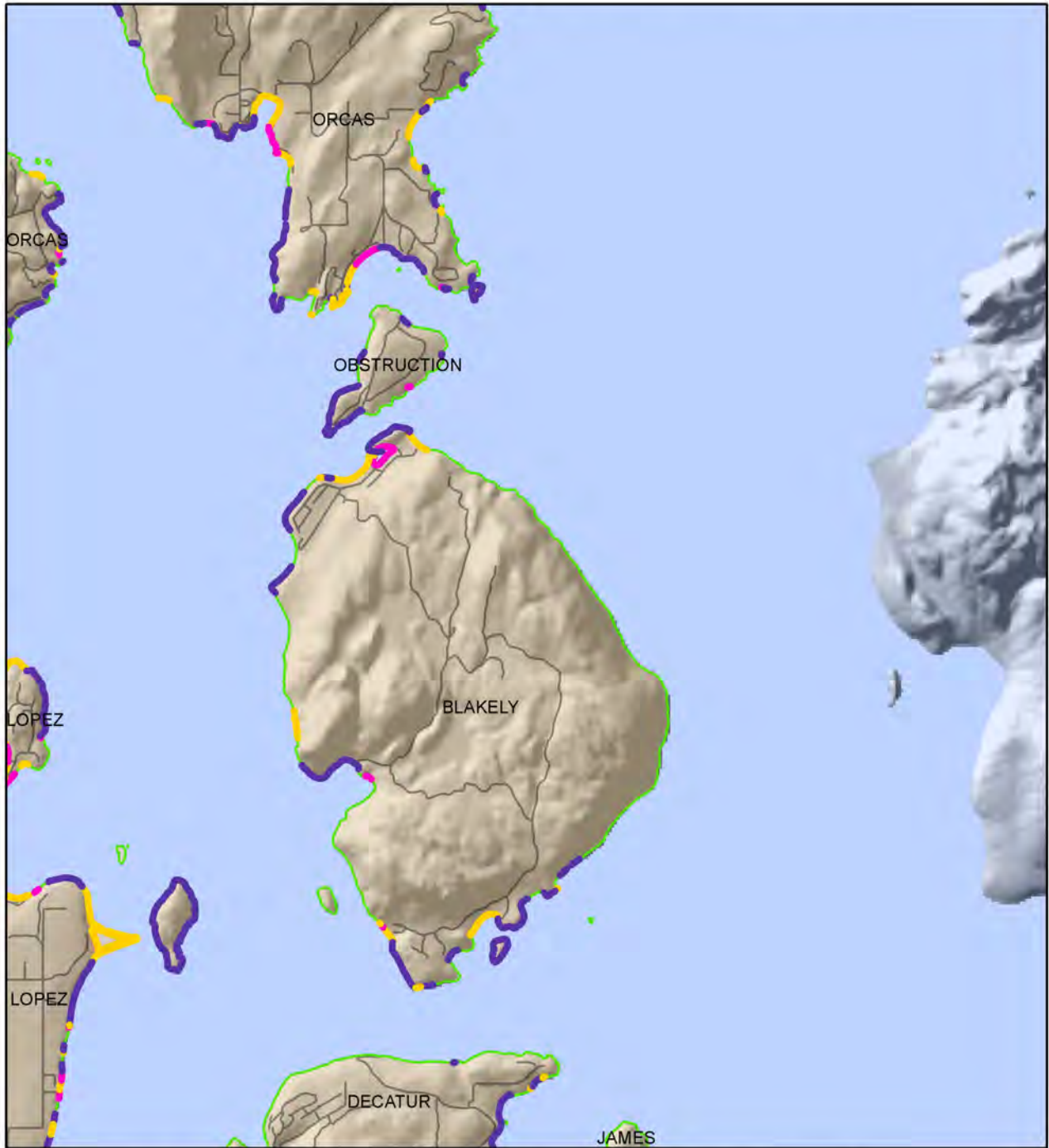
C3



NEARSHORE PROCESS DEGRADATION

B3

B4



C3

D3

D4

San Juan County, Washington

1 0.5 0 1 Miles

Sum of Process Degradation - Normalized

- **HIGH (38 - 92%)**
- **MEDIUM (13 - 38%)**
- **LOW (0.000021 - 13%)**
- **No Degradation (0%)**



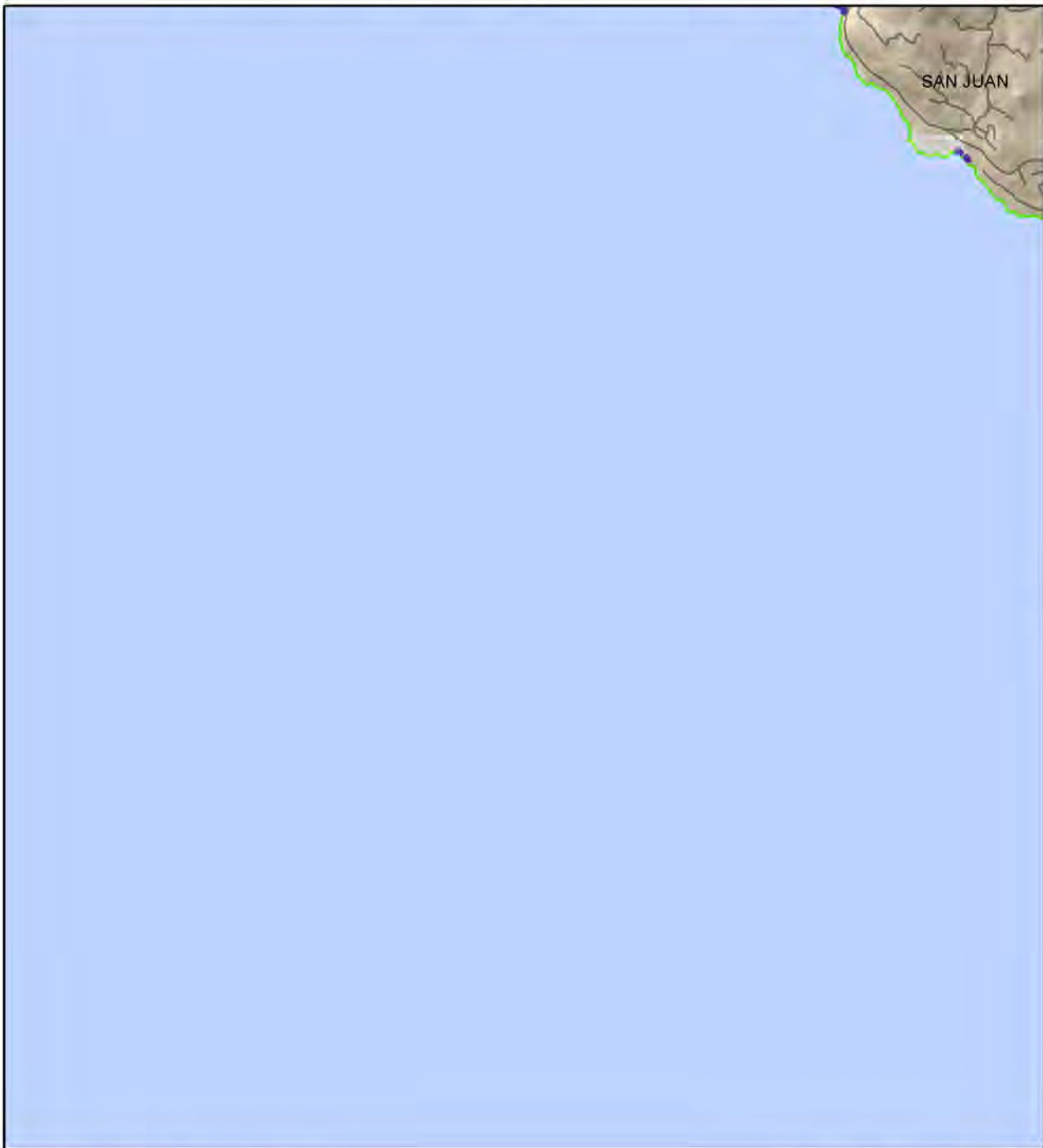
C4



NEARSHORE PROCESS DEGRADATION

C1

C2



D2

San Juan County, Washington

1 0.5 0 1 Miles

Sum of Process Degradation - Normalized

- HIGH (38 - 92%)**
- MEDIUM (13 - 38%)**
- LOW (0.000021 - 13%)**
- No Degradation (0%)**



D1

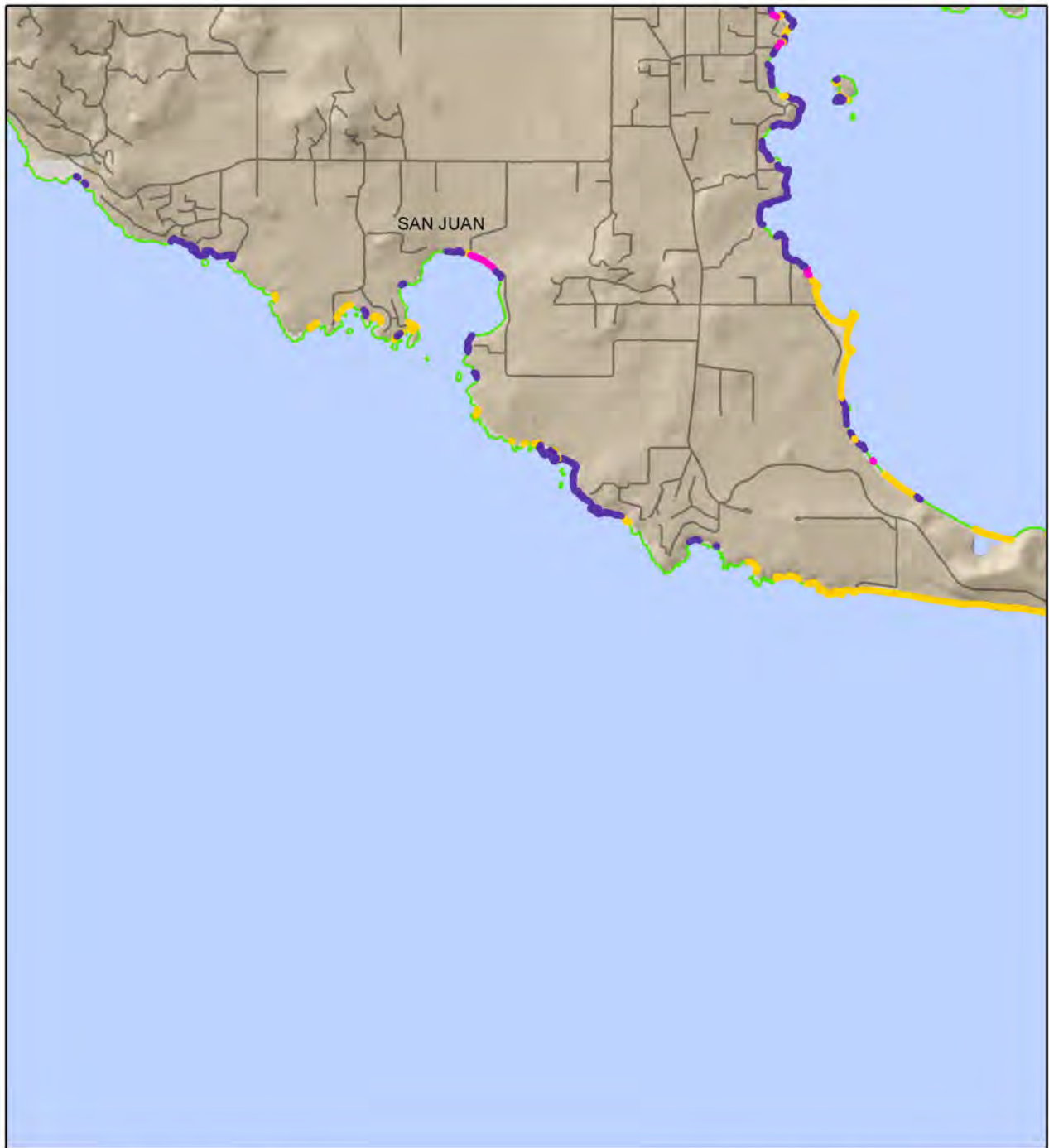


NEARSHORE PROCESS DEGRADATION

C1

C2

C3



D1

D3

San Juan County, Washington

1 0.5 0 1 Miles

Sum of Process Degradation - Normalized

- HIGH (38 - 92%)**
- MEDIUM (13 - 38%)**
- LOW (0.000021 - 13%)**
- No Degradation (0%)**



D2

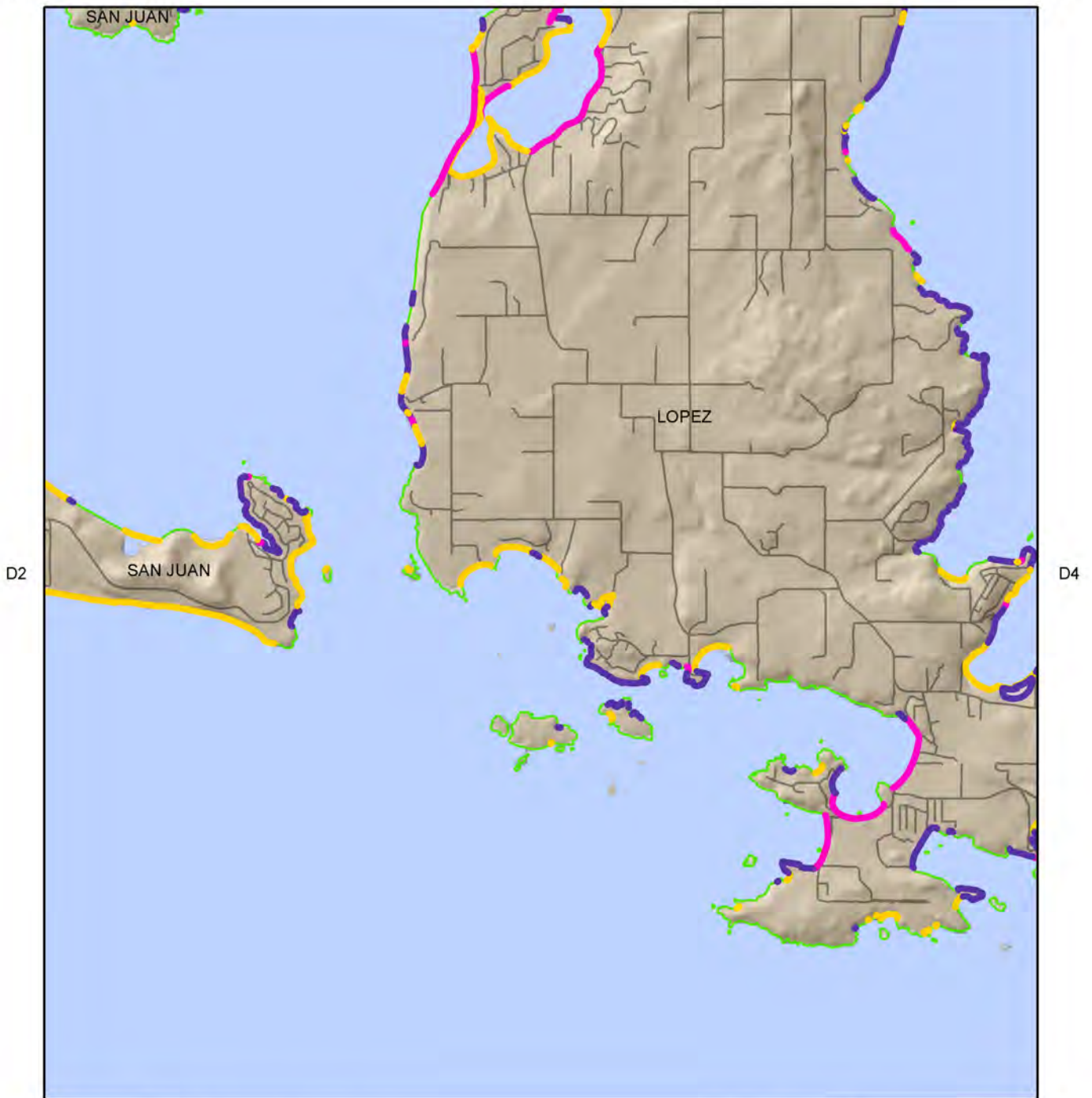


NEARSHORE PROCESS DEGRADATION

C2

C3

C4



San Juan County, Washington

1 0.5 0 1 Miles

Sum of Process Degradation - Normalized

- **HIGH (38 - 92%)**
- **MEDIUM (13 - 38%)**
- **LOW (0.000021 - 13%)**
- **No Degradation (0%)**



D3

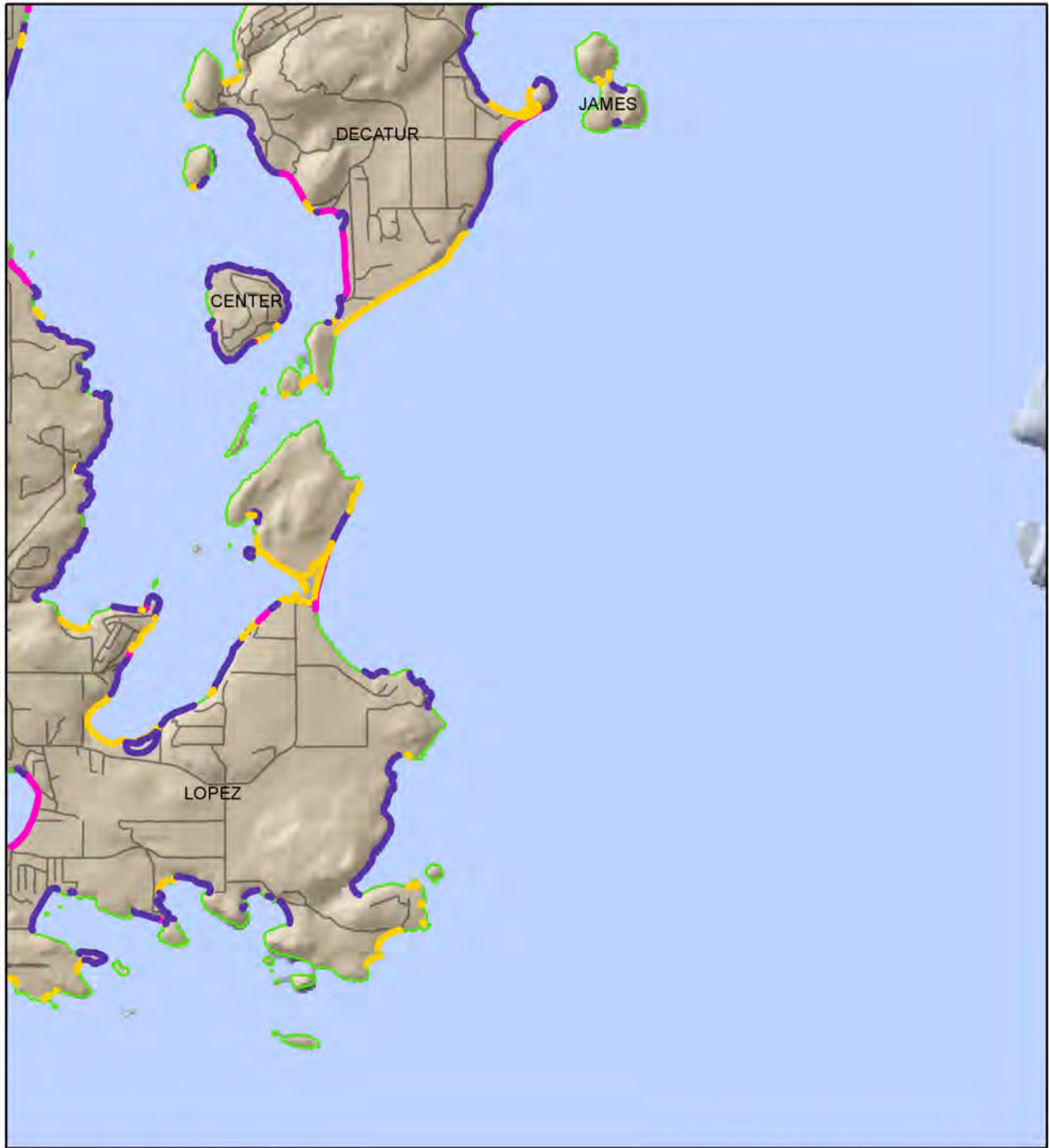


NEARSHORE PROCESS DEGRADATION

C3

C4

D3



San Juan County, Washington

1 0.5 0 1 Miles

Sum of Process Degradation - Normalized

- HIGH (38 - 92%)**
- MEDIUM (13 - 38%)**
- LOW (0.000021 - 13%)**
- No Degradation (0%)**



D4

